

SERC 2011 - General Information

Meeting Location & Contact Information

Mandarin Orchard Hotel

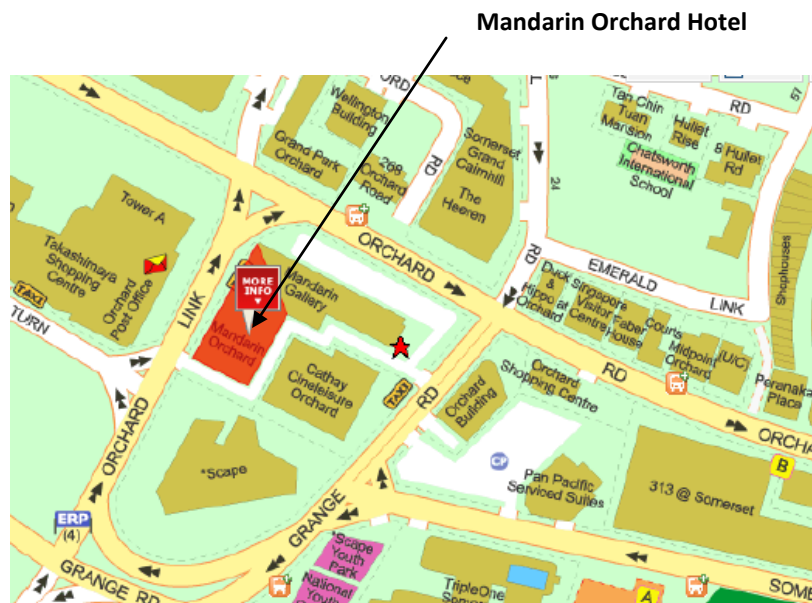
Tel: (65) 6737 4411

Fax: (65) 6732 2361

Email: orchard@meritushotels.com

Website: Address: 333 Orchard Road, Singapore 238867

Nearest MRT station: Somerset (NS23)



SER Conference Secretariat

Ms Joey Kek

Email: kjkek@ntu.edu.sg / serc@ntu.edu.sg

DID: +65 65922621

Conference Registration

Wednesday, 3 August, 5.00 pm – 7.00 pm
Venue: Meeting Room 835, Level 8

Thursday, 4 August and Friday, 5 August, 9.00 am – 6.00 pm
Venue: Mandarin Ballroom I Foyer, Level 6

Saturday, 6 August, 9.00 am – 10.00 am
Venue: Mandarin Ballroom I Foyer, Level 6

All participants are expected to register and collect their conference package prior to attending the conference. A name tag will be provided upon registration and will serve as the official pass to sessions, coffee breaks, lunches and other official functions. A dinner card will also be issued to conference participants who are entitled to attend the Dinner.

Conference Dinner *(for paying participants only)*

Date: Thursday, 4 August 2011
Time: 7.00 pm – 10.00 pm
Venue: Mandarin Orchard Hotel, Mandarin Grand Ballroom, Level 6

Daily Tea Reception & Lunch Buffet

Morning tea will be served daily at Mandarin Ballroom III and afternoon tea will be served inside the meeting rooms.

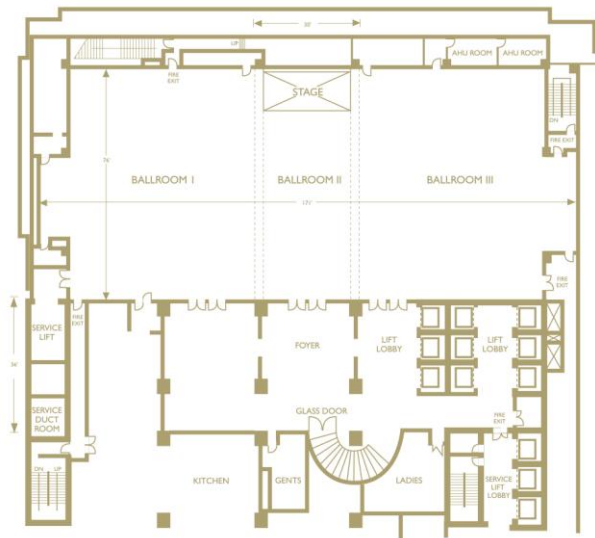
Lunch will be served daily at Mandarin Ballroom III.

Conference Rooms and Floor Plan

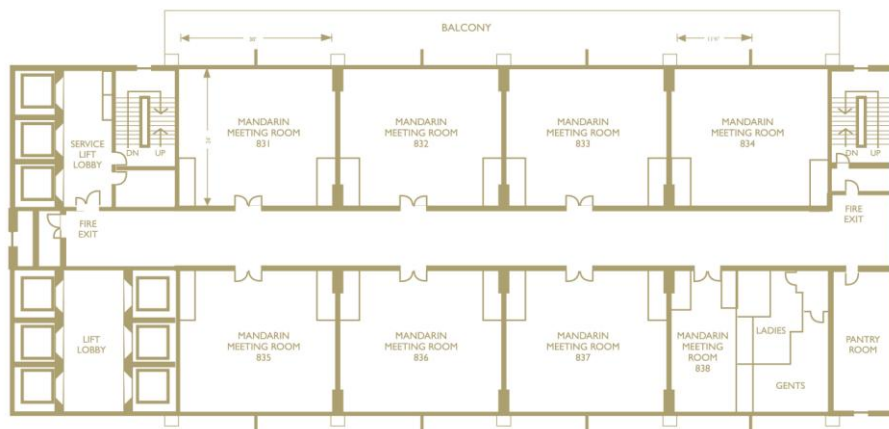
The opening session and plenary sessions will be held at the Mandarin Ballroom I (Level 6).

All invited and contributed sessions will be held at Mandarin Ballroom I (Level 6) and Meeting Room 831 – 837 (Level 8).

Mandarin Ballrooms (Level 6)



Mandarin Meeting Rooms (Level 8)



Uploading of Presentation – Service Station and Hours

Paper presenters are to upload PowerPoint slides to the computers provided in the meeting rooms 10 minutes before their scheduled presentations. Computers are able to accept thumb drive, CD-R and CD-RW.

Information & Assistance

Visit the Help Desk located outside Mandarin Ballroom I Foyer (Level 6).

Personal Message Board

If you wish to get in touch with fellow delegates, please leave your message on the Personal Message Board located at the Help Desk outside Mandarin Ballroom I Foyer.

Internet Access

Wireless internet access is available within the hotel area.

Travel & Tour

Tour information is available at the hotel reception.

Contact Information

Emergency

Police: 999

Fire Brigade: 995

Ambulance: 995

Flight Information: 800 542 4422

Tourist Hotline: 800 736 2000

Local Directory Assistance: 100

Dial a Cab

Taxi Singapore: (+65) 6600 2800
Comfort & CityCab: (+65) 6552 1111
TIBS & SMRT: (+65) 6555 8888
Premier: (+65) 6363 6888
Trans-Cab: (+65) 6555 3333
SMART: (+65) 6485 7777
Limousine Cab: (+65) 6535 3534

Credit cards

American Express: 1800 295 0500
JCB: (+65) 6734 0096
Master Card: 800 110 0113
Diners Club: (+65) 6416 0900
VISA: 800 448 1250

Electricity and Plug

Electricity in Singapore is 230 Volts, alternating at 50 cycles per second. If you travel to Singapore with a device that does not accept 230 Volts at 50 Hertz, you will need a voltage converter. Outlets in Singapore generally accept 1 type of plug, having two parallel flat pins with ground pin shown on the right. If your appliances plug has a different shape, you may need a plug adapter. Depending on how much you plan to travel in the future, it may be worthwhile to get a combination voltage converter and plug adapter.

Singapore plug adapters: the grounded plug adapter WA-7 and the ungrounded plug adapter #5. These are the recommended wall outlet plug adapters for Singapore.